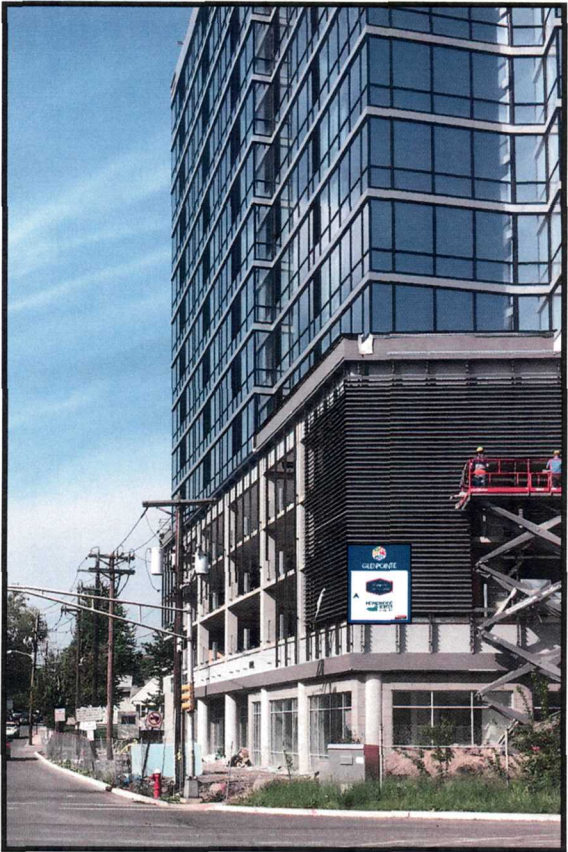


S/F Directional Monument



ELEVATION DETAIL
SCALE: 1/2" = 1'
logos will be routed and push-thru/ white acrylic
small copy will be applied vinyl- colors TBD

SIDE VIEW
SCALE: 1/2" = 1'



ELEVATION VIEW
SCALE: NTS



A VISUAL
SOLUTIONS
COMPANY.
7640 Fort Smallwood Road
Baltimore, Maryland 21226
800.854.0568

PROJECT FILE: Glenpointe Wayfinding	
ORDER FILE: Glenpointe Wayfinding	
CITY/STATE: Hackensack, NJ	PHONE NUMBER: 201.968.4806
DRAWING DATE: 05/22/18	SUBMIT REP: ECR
PROJECT MGR: SDI	

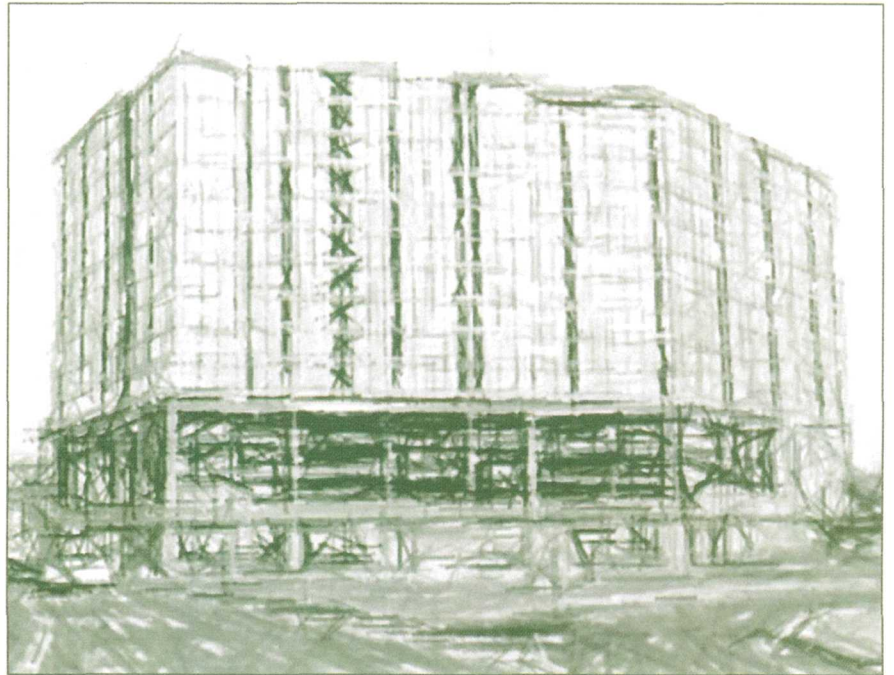
NO.	DATE	PREP OWNER	DESCRIPTION
1	05-23-18	DELLUMINO	
2	06-27-18	2020/08/01	
3	06-27-18	2020/08/01	
4	05-23-18	2020/08/01	
5	05-23-18	2020/08/01	
6	05-23-18	2020/08/01	

This drawing remains the exclusive property of Gable. It is submitted for your incorporation in the purchase of a product(s) manufactured according to these plans. This drawing cannot be copied in whole or in part, altered or submitted in any manner without written permission of Gable. Exceptions are previously copyrighted artwork supplied by client.

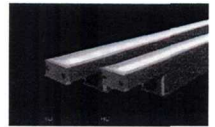
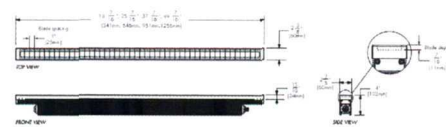
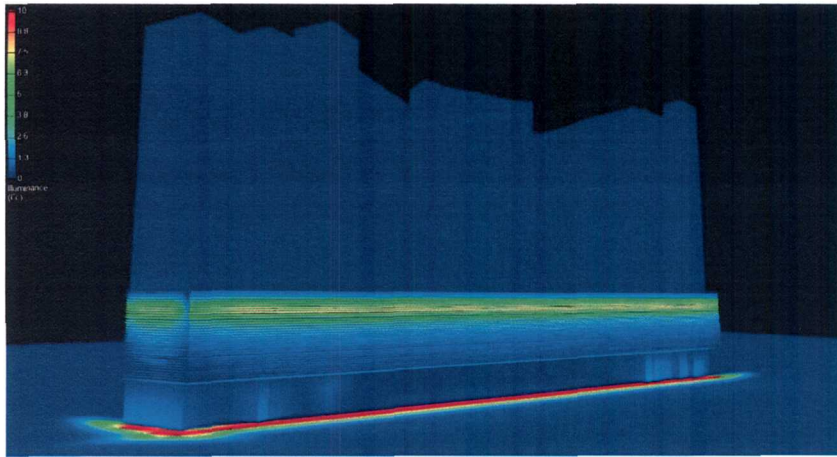
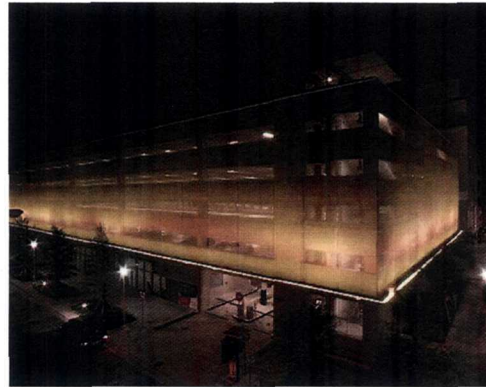
NOTES:
Sign 15- 10ft SF Illum. Directional Sign

DWG. TYPE: Concept		
PROJECT NO.	TASK NO.	QTY.
77637-1	158973	1
DWG. NO.	SHEET	
2938MRU	1 of 1	

DUAL BRAND
HOMWOOD SUITES
HAMPTON INN
LIGHTING DESIGN SUBMISSION
JUNE 2018



A dark, abstract architectural rendering of a building at night. The structure is composed of several dark, rectangular volumes. A prominent horizontal band of light reflects off a surface, possibly water or a polished floor, creating a bright, glowing line that stretches across the lower portion of the image. The overall atmosphere is mysterious and modern.



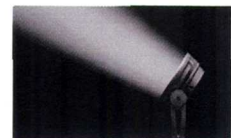
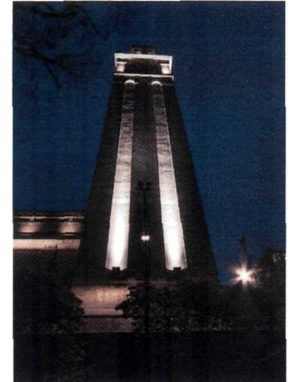
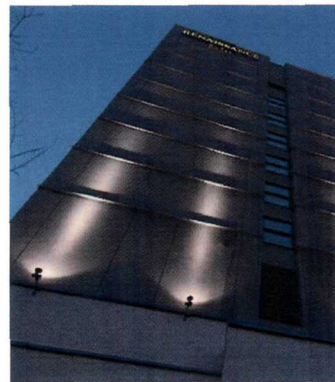
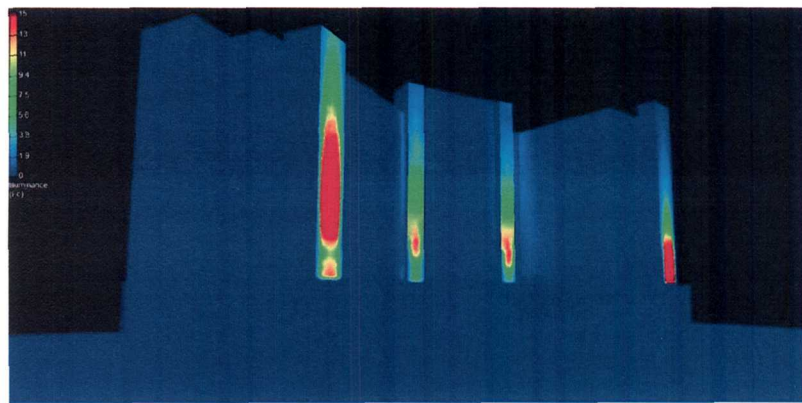
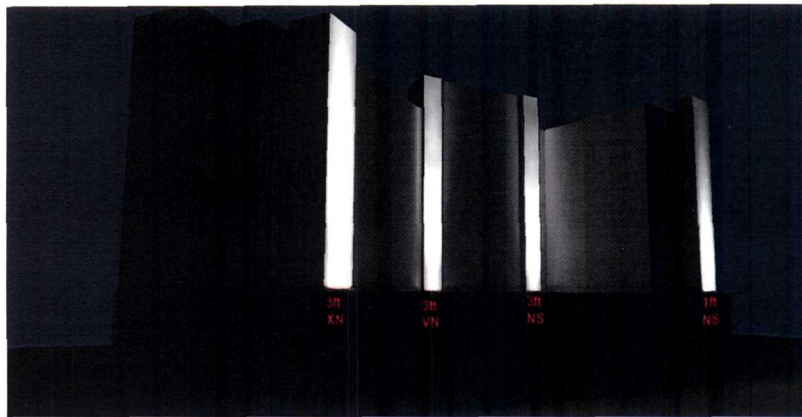
These fixtures use optics which keep the beam spread in a very tight line close to the perimeter of the building facade and out of direct view of esidentail surroundings. In addition to the beam control fixtures will also utilize glare controlled louvers shielding the view of the light source from guests and residents.

www.cdmlight.com

All light fitting images used remain the property of the copyright holder and are used for the purposes of this presentation only

[illegible]

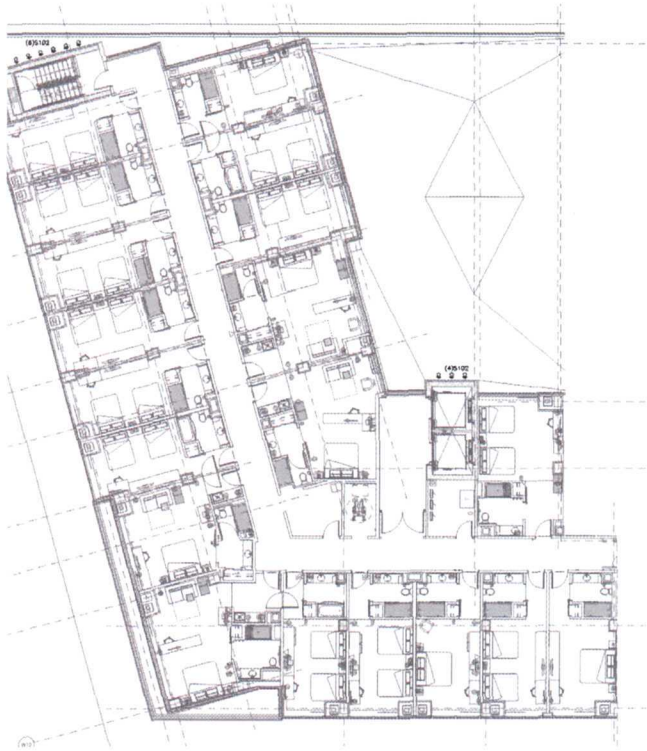
VERTICAL LIGHTING



LED wash fixtures provide accent lighting on the decorative facades giving adding a dramatic accent to the building. Fixtures will be mounted along the bottom of the vertical solid towers facing away from the highway.

Wash fixtures utilize optics controlling the beam spread at a very tight angles keeping the light to the tower walls themselves. In addition to the beam control, fixtures will also utilize glare control louvers shielding the view of the light source from both guests and off property.

VERTICAL LIGHTING



HAMPTON LIGHTING

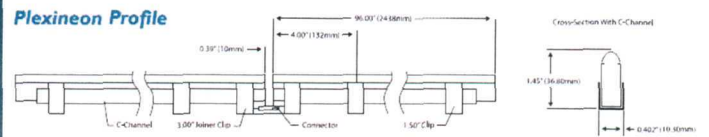


HOMESWOOD LIGHTING

PARAPET LIGHTING



Plexineon Profile



LED Faux Neon which lines the parapet of the building emphasizing the shape of the structure and providing a visual accent and identifier.

LED tape light is inserted into a diffused low profile acrylic lensing, preventing direct view from the LED's themselves with no direct glare no view of the LED light source.



Lighting Design Group

DUAL BRAND

HOMEWOOD SUITES HAMPTON INN

LIGHTING DESIGN SUBMISSION

JUNE 2018





6'-4" x 47'-0"

zoning square footage allowed: 303 sf

signage square footage provided: 300.8 sf

An architectural rendering of a modern, multi-story hotel building, identified by the "Hampton Inn & Suites" logo on its upper facade. The building features a white exterior with a grid of windows and a dark, horizontal-slatted base. It is situated at a street corner with a landscaped area including trees and a small pool area visible at the ground level. The sky is blue with scattered white clouds.

Job Number	14013
Size	1215" x 1'-0"
Green	
Checked	
Date	11/6/14

A7

A7

