

# **Overpeck County Park Areas I & II**

**Change of Use Public Hearing  
July 23<sup>rd</sup> 2018**

**Teaneck, NJ 7:00pm**

# **Statutory Requirement – NJAC 7:36-26 (a) (c)**

**“Local government may change the recreational or conservation purpose or use, to another recreational or conservation use...in accordance with the following procedures...”**

- **At least one public hearing ninety days prior to the final approval of change**
- **Public hearing must be held on a weekday evening in the local municipality**
- **Transcript of the public hearing to be submitted by the County to the NJ DEP**



# Overpeck County Park: Area I & II



# Area I: Overpeck Park Habitat Restoration





# Area I: Existing Conditions

- Degraw Avenue Noise
- Degraded Paths
- Debris Piles
- Water Quality
- Stormwater Erosion
- Dominant Invasive Plants



# Area I

## GOALS – WHAT WE PLAN TO DO AND WHY:

**Remove historical fill and debris:** to create more natural soil conditions that better support native plants

**Slow water flow and redirect surface flows:** to raise groundwater tables and better resemble historic flow paths

**Enhance Teaneck Creek connections:** to improve riparian/floodplain habitat

**Create more open water and wet areas:** to enhance how the overall wetland, stream, and riparian habitats function

**Enhance public experience:** by improving trail design, creating a greater diversity of habitats, and reducing noise from Degraw Avenue





# Area I

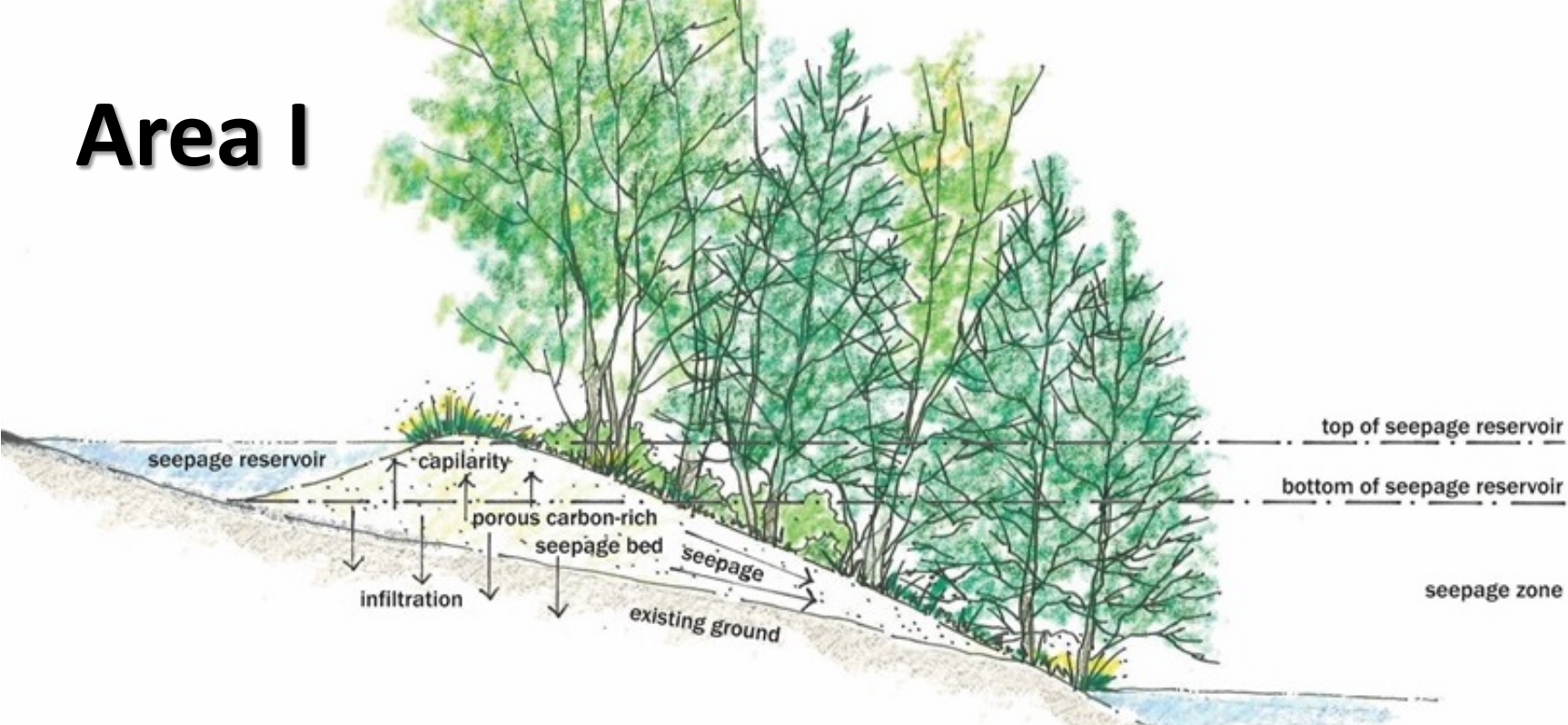
## Restoration Design Features:

- Debris Pile Removals
- Sand Seepage Berms
- Path Improvements
- Degraw Avenue Berm





# Area I



Sand Seepage Berms





Area I



Path Improvements







**Area I**



**Degraw Avenue Berm**

***Before***

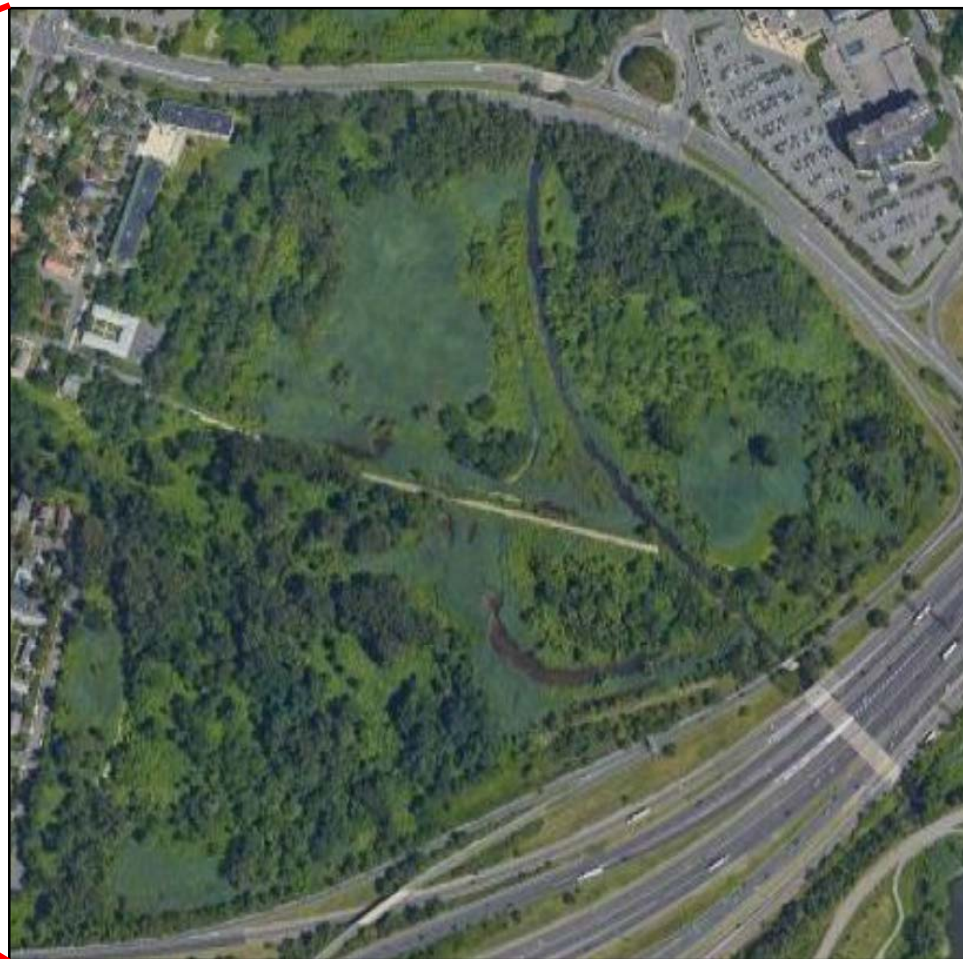


***Potential  
After: New  
Connectivity***





# Area II





# Area II



## Current Public Experience:

- No Safe Public Access
- Open Landfill
- Water quality
- Dominant Invasive Plants





# Area II

## GOALS – WHAT WE PLAN TO DO AND WHY:

**Remove historical fill and debris:** to close out the landfill conditions and create more natural soil conditions that better support native plants

**Enhance public experience:** create public access areas including a new parking area and pedestrian pathways

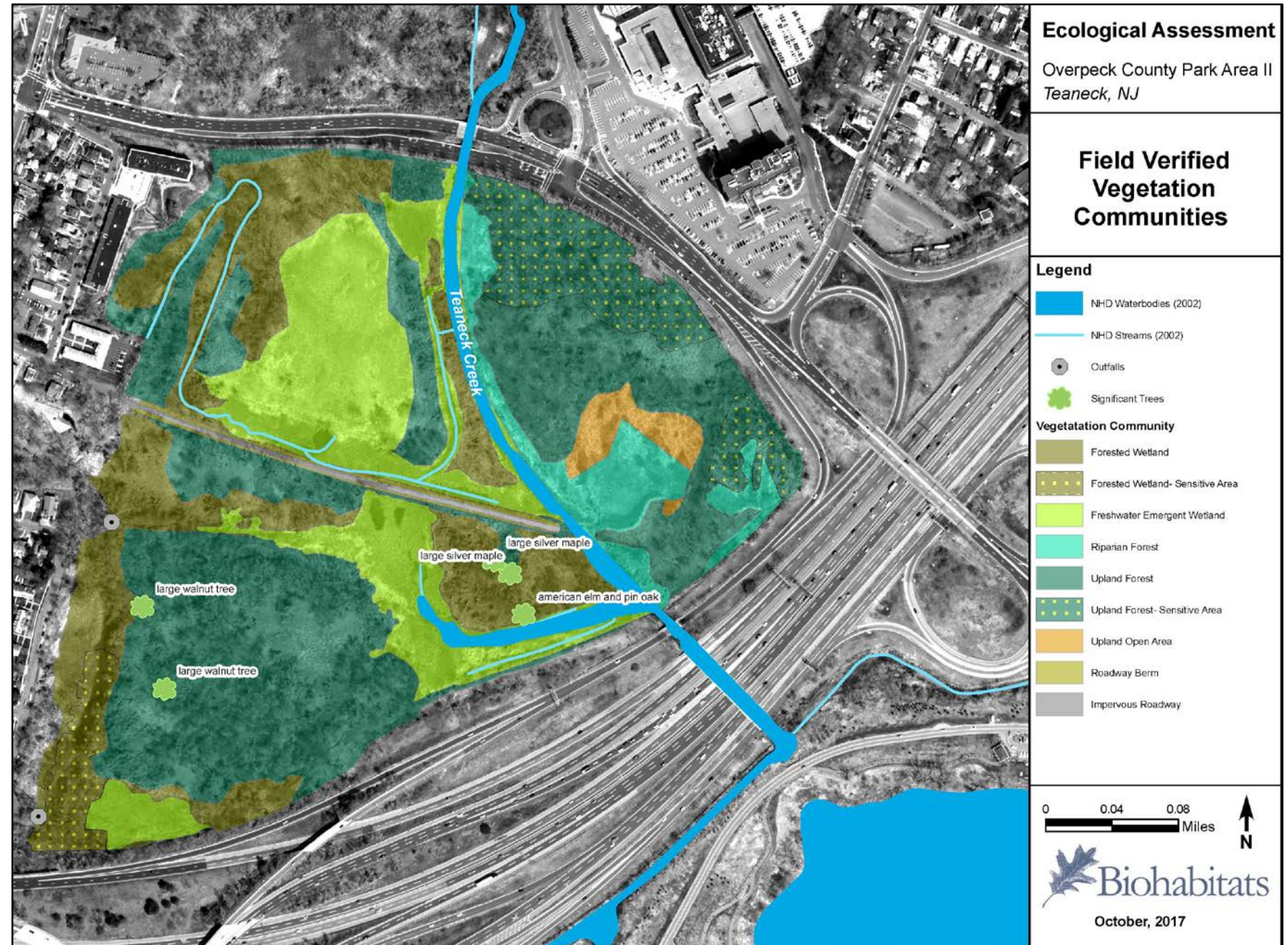
**Enhance Teaneck Creek connections:** with improved riparian/floodplain habitat and regenerative stormwater design features



# Area II

## Existing Conditions:

- Upland open areas
- Forested habitat
- Wetlands
- Sensitive areas



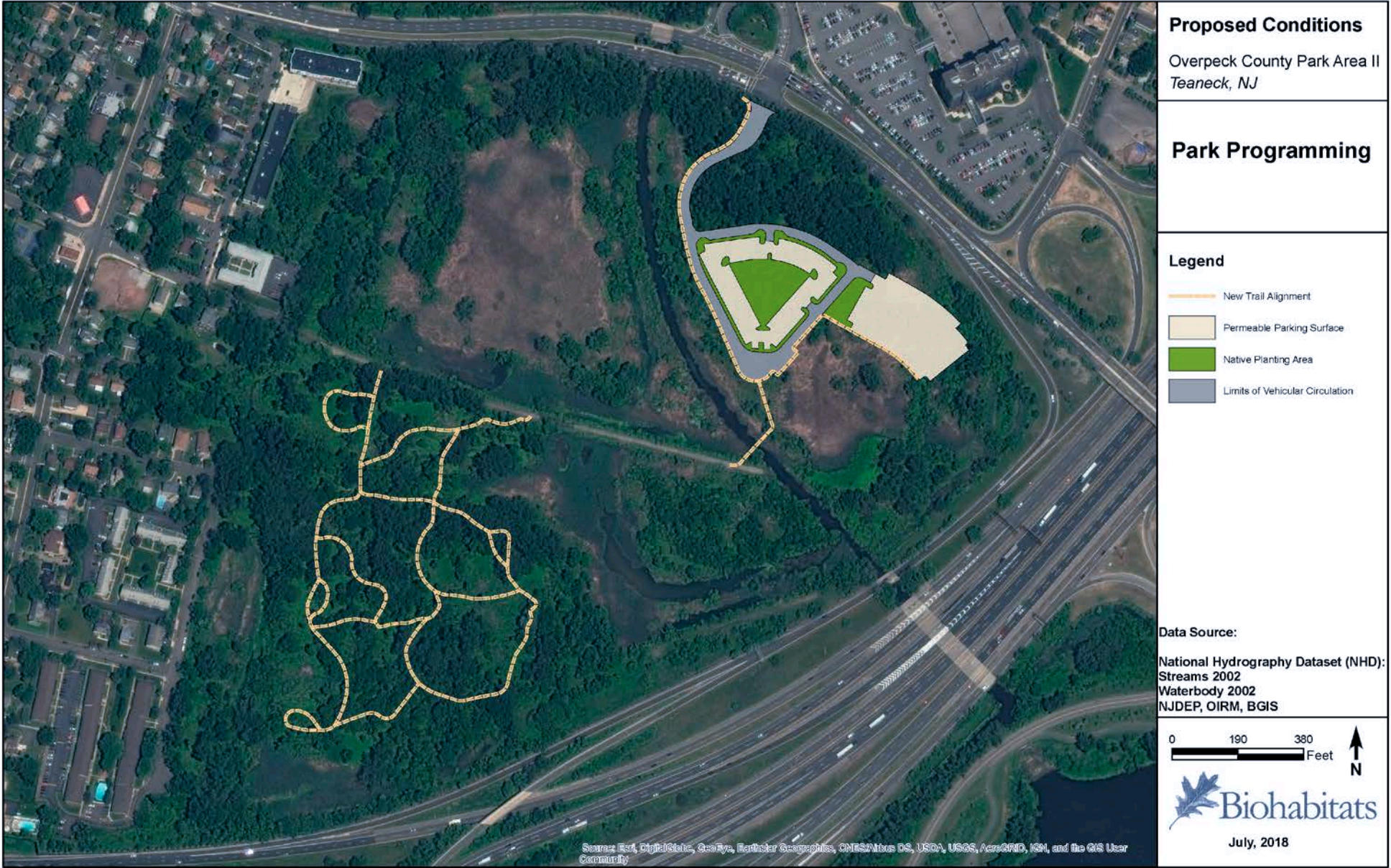


# Area II





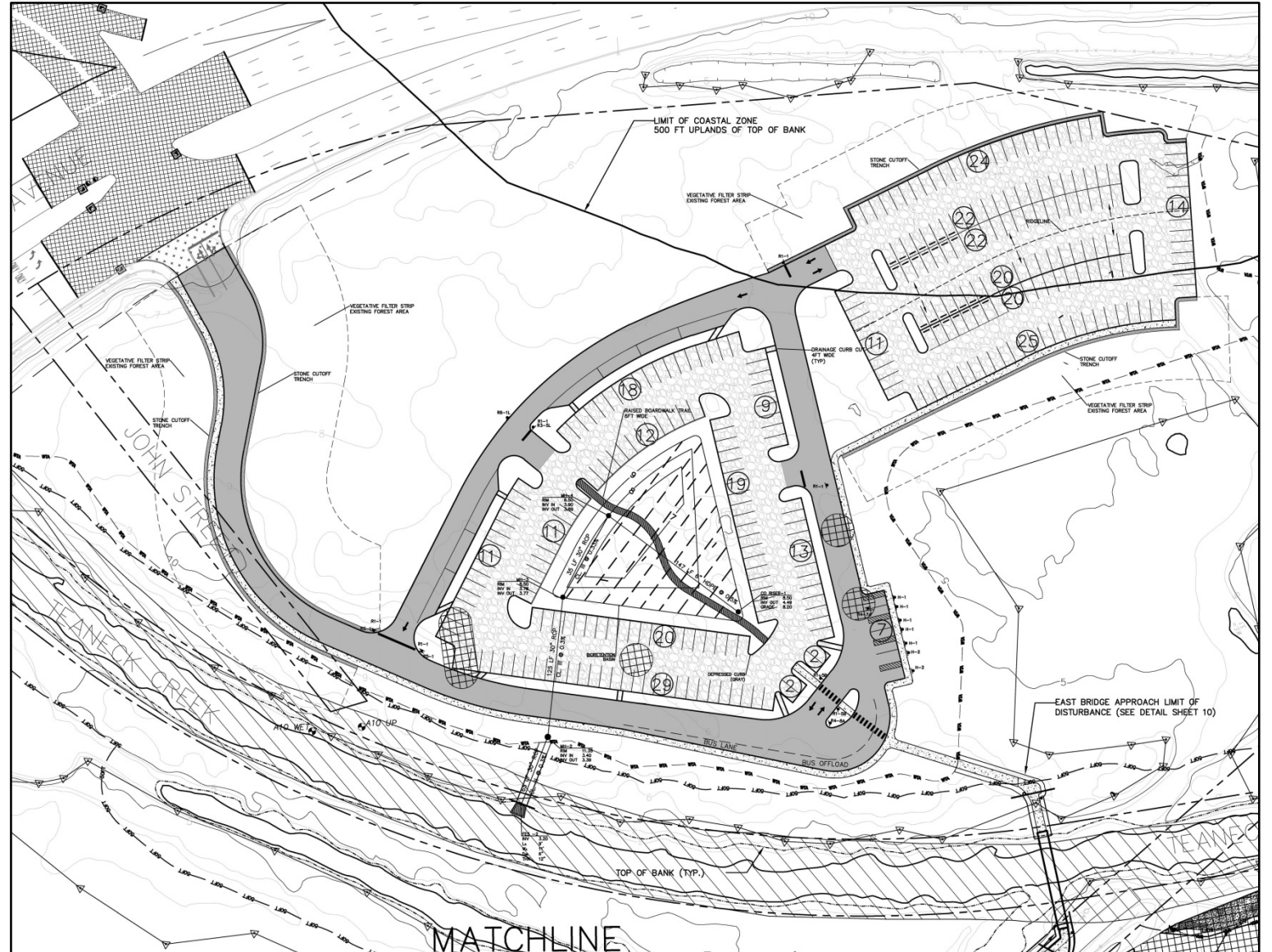
# Area II





# Area II

- No Impacts to Wetlands OR Sensitive Habitats
- Native Plant Species used for Site Stabilization and to Enhance Existing Ecology
- Only Roadways will be Paved; Parking Lot is Stone and will not be plowed in Winter



**New Parking Area**



# Area II

## Permeable Parking Lot & Bioswale to Filter Stormwater

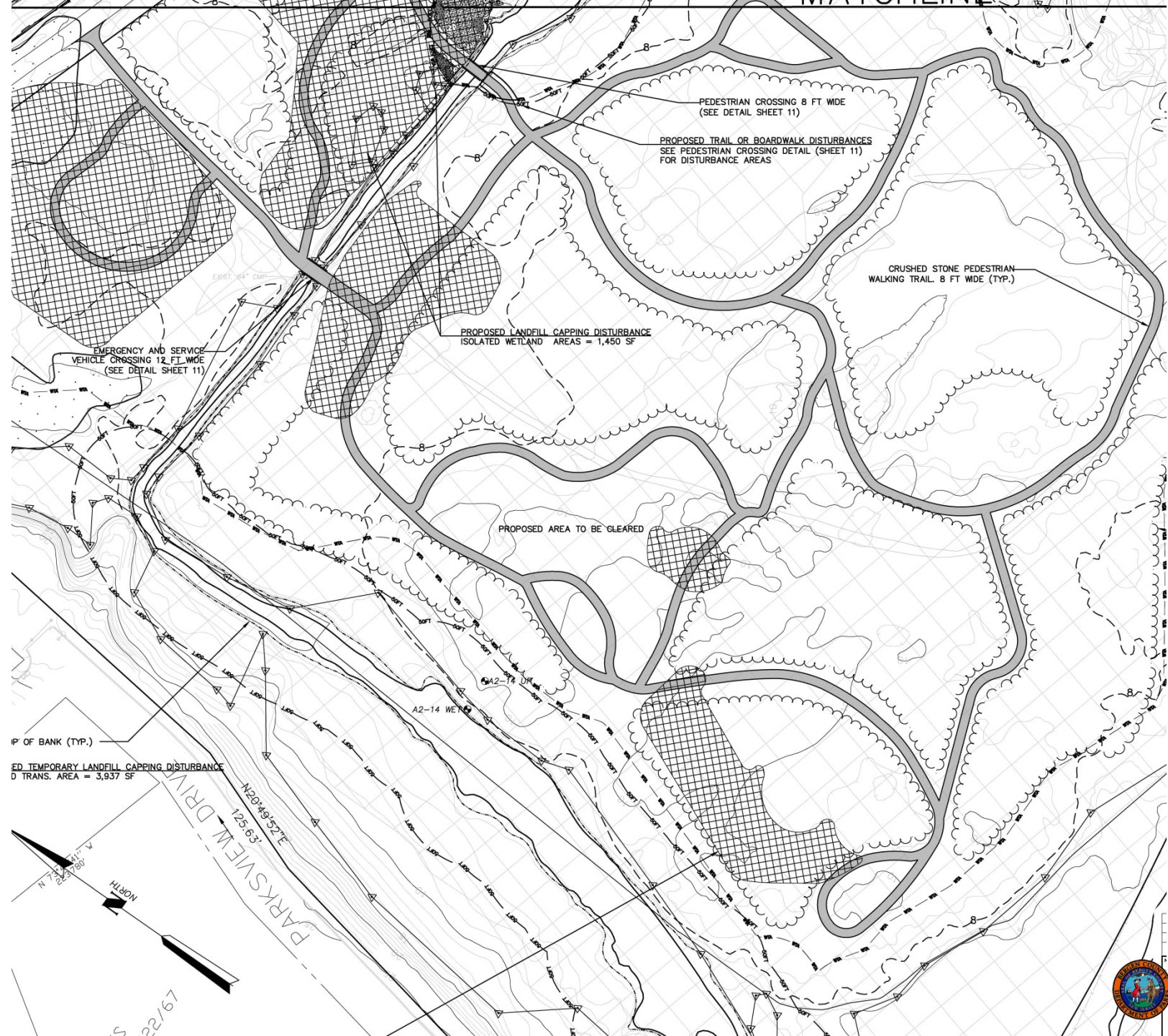




# Area II

- Permeable Pathway Network
- Inserted/Blended into the Existing Landscape
- Minimize Vegetation Loss

## New Pedestrian Pathways





# Area II





## **NEXT STEPS – *WHAT YOU CAN DO:***

- **Public Comment Period from July 23<sup>rd</sup> to August 6<sup>th</sup>**
- **Written Comments to be Submitted to the County:**

Adam Strobel

Bergen County Department of Parks  
One Bergen County Plaza, 4<sup>th</sup> Floor  
Hackensack, NJ 07601

- **Copies sent to NJ Dept. of Environmental Protection:**

NJ Dept. of Environmental Protection - Green Acres Program  
Bureau of Legal Services and Stewardship  
501 East State Street, 1st Floor  
Mail Code 501-01  
P.O. Box 420  
Trenton, NJ 08625-0420

